



C-WEAVETM design

Carbon / InnegraTM

Design appeal & Structural benefits

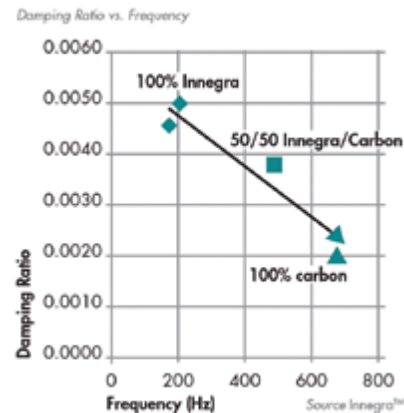
Combines the **ductile behavior** of InnegraTM with the **stiffness behavior** of carbon into a very **light** and visual woven carbon **look**.

InnegraTM, which is a High Modulus Polypropylene based Fiber brings **impact resistance** and **vibration damping benefits** balancing the carbon high frequency vibration mode and low impact resistance. Very valuable in all dynamic sports equipment products.

Very light and visual woven carbon look



• Vibration damping benefits





C-WEAVE™ design

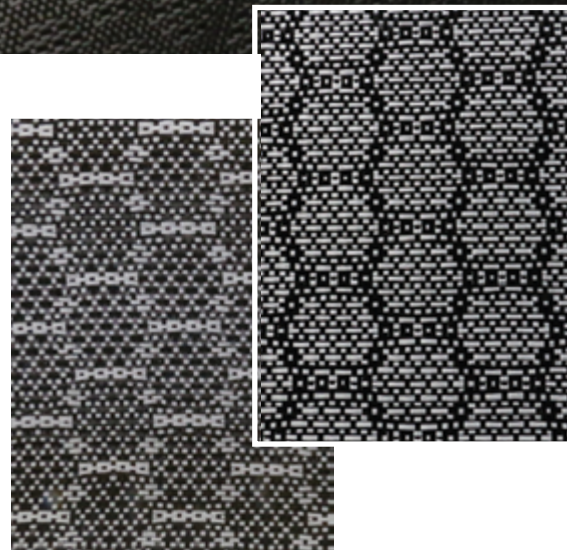
Carbon / Innegra™

TECHNICAL DATA

WARP	100% carbon 3K
WEFT	100% Innegra™ (30% of total weight)
TOTAL WEIGHT	176 gsm

APPLICATIONS

- Sports equipment
- Automotive body panels, interior parts



A smart feature on both sides

C-weave 176D1054 with carbon 3K Fiber & Innegra™

CHOMARAT

www.chomar.com